

# UCG 85-12

12V 85AH

Deep Cycle

# Ultracell®

'Quality in Every Language'

## UCG85-12



## Physical Specification

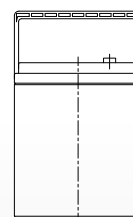
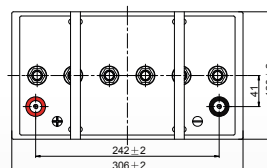
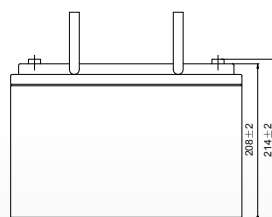
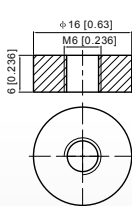
Part Number:	<b>UCG85-12</b>
Length:	<b>306 ± 2 mm</b>
Width:	<b>128 ± 2 mm</b>
Container Height:	<b>208 ± 2 mm</b>
Total Height (with terminal):	<b>214 ± 2 mm</b>
Approx Weight:	<b>Approx 26.7kg</b>

## Specifications

	Normal Voltage	12V
	Normal Capacity (20HR)	85.0AH
Terminal Type	Standard Terminal	F6
	Optional Terminal	-
Container Material	Standard Option	ABS
	Flame Retardant Option (FR)	ABS(UL94:VO)
Rated Capacity	88.4 AH/4.25A	(20hr, 1.80V/cell, 25°C / 77°F)
	85 AH/7.80A	(10hr, 1.75V/cell, 25°C / 77°F)
	68.0 AH/13.6A	(5hr, 1.75V/cell, 25°C / 77°F)
	59.1 AH/19.7A	(3hr, 1.75V/cell, 25°C / 77°F)
	46.8 AH/46.8A	(1hr, 1.67V/cell, 25°C / 77°F)
Max Discharge Current	850A (5s)	
Internal Resistance	Approx 6.0mΩ	
Discharge Characteristics	Operating Temp. Range	Discharge: -20 ~ 55°C (-4 ~ 131°F)
		Charge: 0 ~ 40°C (32 ~ 104°F)
		Storage: -20 ~ 50°C (-4 ~ 122°F)
	Nominal Operating Temp. Range	25 ± 3°C (77 ± 5°F)
	Cycle Use	Initial Charging Current less than 21.25A Voltage 14.4V ~ 15.0V at 25°C (77°F) Temp. Coefficient -30mV/°C
	Standby Use	No limit on Initial Charging Current Voltage 13.5V ~ 13.8V at 25°C (77°F) Temp. Coefficient -20mV/°C
Capacity affected by Temperature	40°C (104°F) 103%	
	25°C (77°F) 100%	
	0°C (32°F) 86%	
Design Floating Life at 20°C	15 Years	
Self Discharge	Ultracell batteries may be stored for up to 6 months at 25°C(77°F) and then a refresh charge is required. For higher temperatures the time interval will be shorter.	

## Dimensions

### F6 Terminal



ALL DATA IS SUBJECT TO CHANGE WITHOUT NOTICE

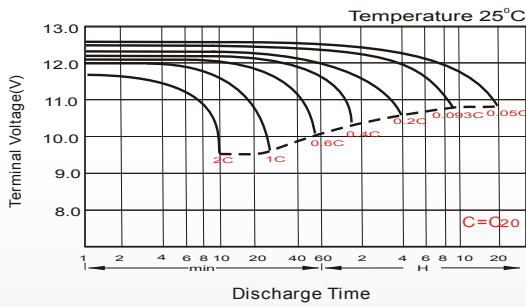
### Constant Current Discharge (Amperes) at 25°C (77°F)

F.V/Time	20 min	30 min	45 min	1h	2h	3h	4h	5h	6h	7h	8h	9h	10h	20h
1.85V/cell	71.9	56.4	43.1	36.0	22.9	17.4	14.4	12.5	10.8	9.52	8.59	7.85	7.32	4.08
1.80V/cell	82.4	63.1	47.5	39.8	24.7	18.7	15.3	13.1	11.3	10.0	9.00	8.25	7.64	4.25
1.75V/cell	92.6	69.4	51.3	42.6	26.2	19.7	16.0	13.6	11.7	10.3	9.29	8.50	7.80	4.34
1.70V/cell	99.7	74.3	54.5	45.1	27.8	20.5	16.6	14.0	12.1	10.7	9.56	8.73	7.98	4.39
1.67V/cell	103.8	77.2	56.4	46.8	28.5	21.2	17.0	14.3	12.3	10.8	9.71	8.84	8.07	4.43
1.60V/cell	112.5	82.6	60.6	49.6	29.7	22.0	17.6	14.8	12.6	11.1	9.88	9.03	8.23	4.50

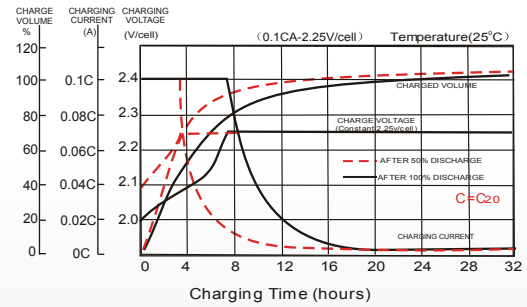
### Constant Power Discharge (Watts) at 25°C (77°F)

F.V/Time	20 min	30 min	45 min	1h	2h	3h	4h	5h	6h	7h	8h	9h	10h	20h
1.85V/cell	137.6	108.8	83.5	70.2	44.7	34.1	28.4	24.6	21.3	18.9	17.1	15.6	14.6	8.14
1.80V/cell	155.6	120.4	91.4	77.1	48.1	36.4	30.0	25.7	22.3	19.7	17.9	16.4	15.2	8.47
1.75V/cell	172.9	131.2	98.1	82.1	50.8	38.4	31.3	26.7	23.0	20.4	18.4	16.9	15.5	8.63
1.70V/cell	184.3	139.3	103.4	86.3	53.6	39.9	32.2	27.4	23.8	21.0	18.9	17.3	15.8	8.73
1.67V/cell	189.6	143.2	106.3	89.1	54.8	41.0	32.9	27.9	24.1	21.3	19.2	17.5	16.0	8.81
1.60V/cell	203.2	151.9	113.4	94.1	56.7	42.4	34.1	28.7	24.6	21.7	19.4	17.8	16.3	8.92

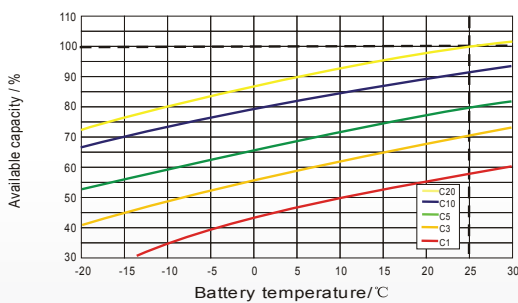
### Discharge Characteristics



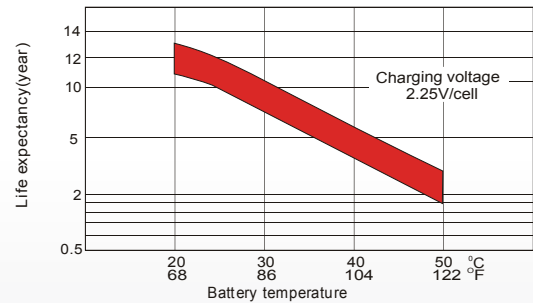
### Float Charging Characteristics



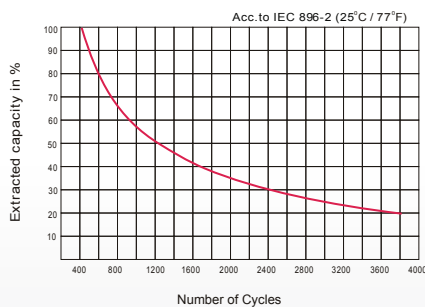
### Temperature Effects in Relation to Battery Capacity



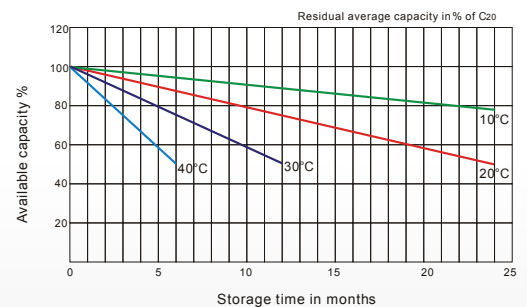
### Effect of Temperature on Long Term Float Life



### Cycle Life in Relation to Depth of Discharge



### General Relation of Capacity VS. Storage Time



ALL DATA IS SUBJECT TO CHANGE WITHOUT NOTICE